

Central Valley Water Board

Clay Rodgers

Assistant Executive Officer

Joe Karkoski

Irrigated Lands Program Manager

State Water Resources Control Board

Agricultural Expert Panel

May 5, 2014



Overview

- Irrigated Lands Regulatory Program
- Dairy (Confined Animal Program)

Relationship of Information Collected to Evaluating Compliance

Are implemented practices protecting water quality?

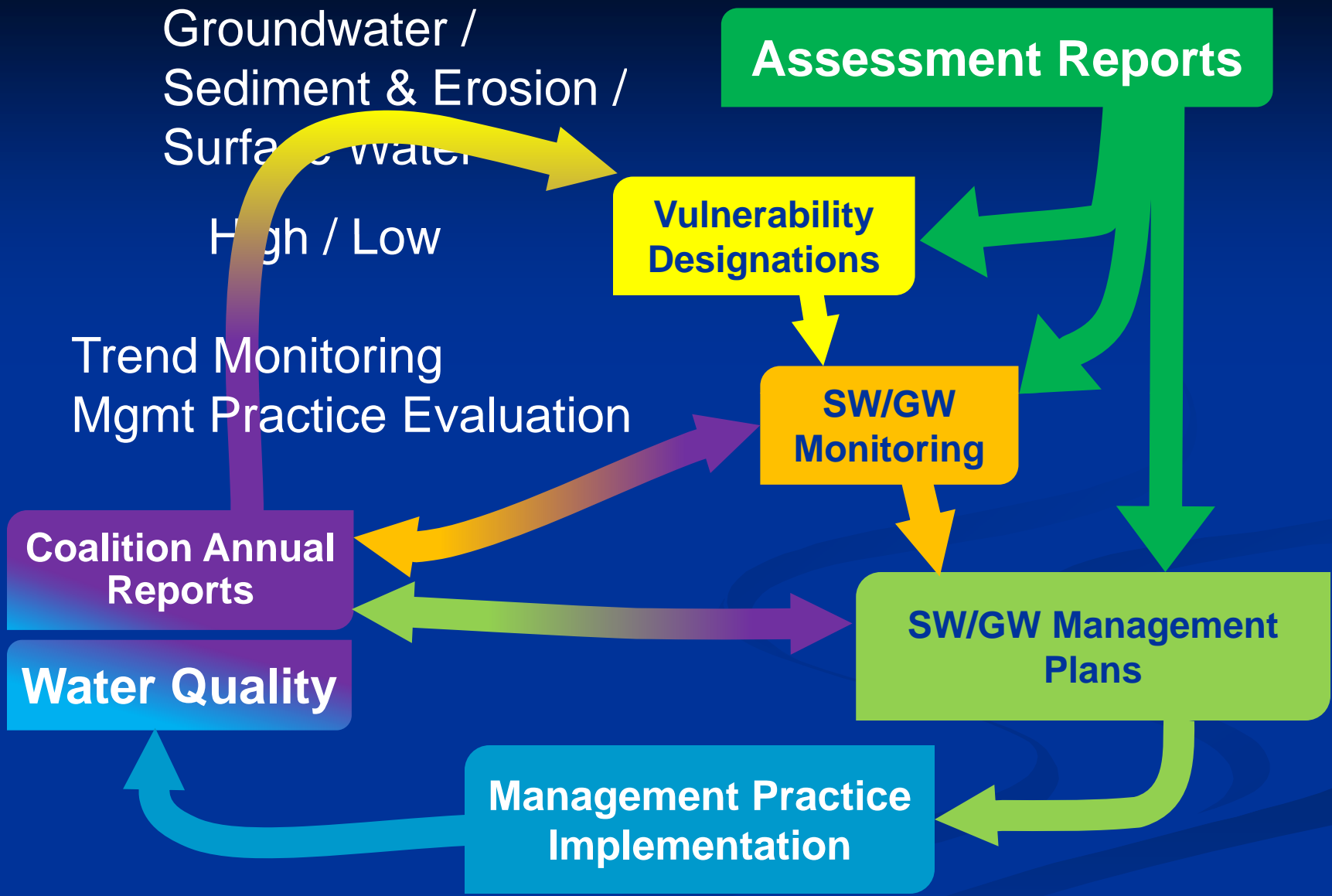
Water quality and practice information is needed to answer that question.

Order is structured to focus on vulnerable areas; facilitate information collection; provides feedback.

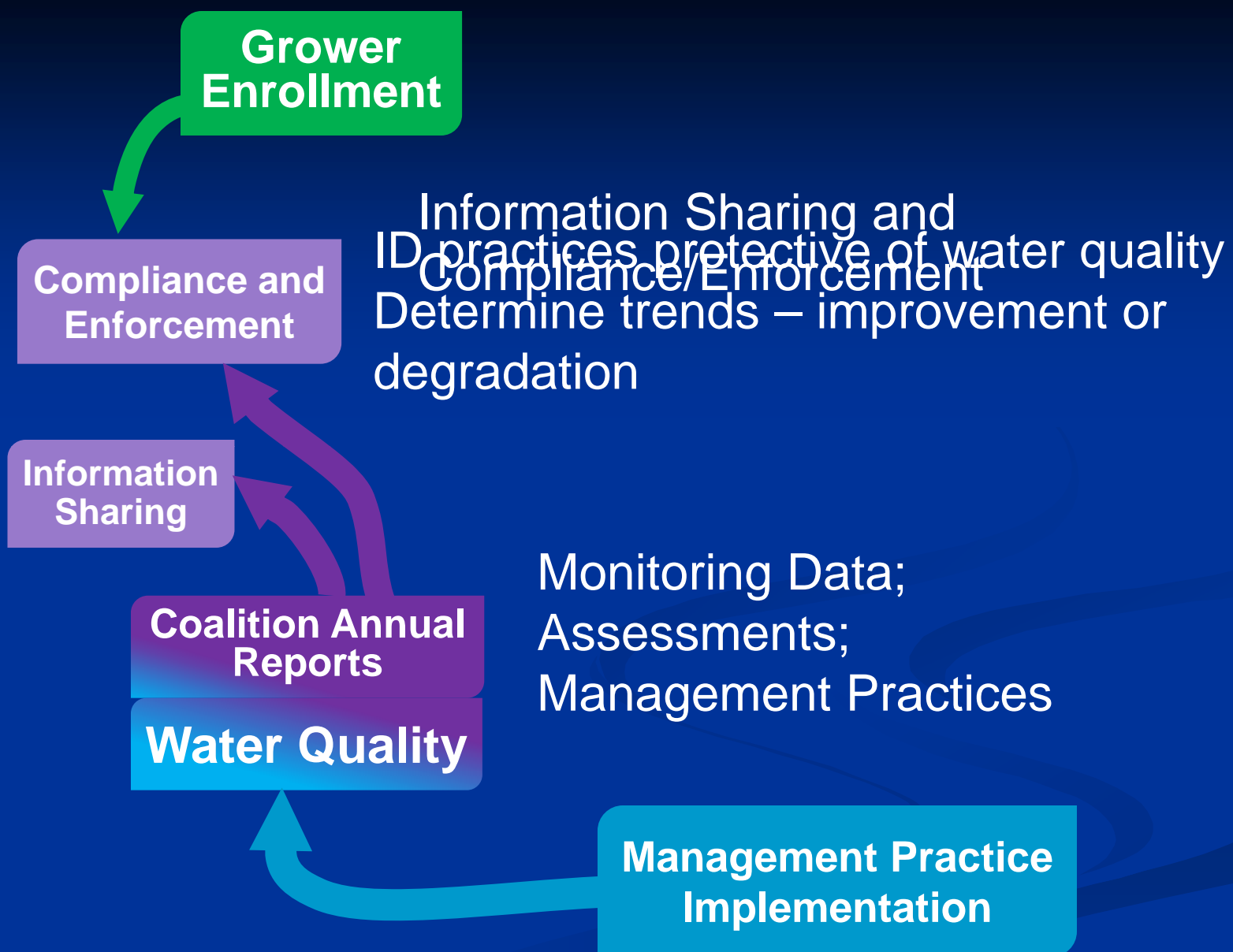
Water Quality

**Management Practice
Implementation**









Grower Enrollment

Compliance and Enforcement

Information Sharing

Coalition Annual Reports

Water Quality

Management Practice Implementation

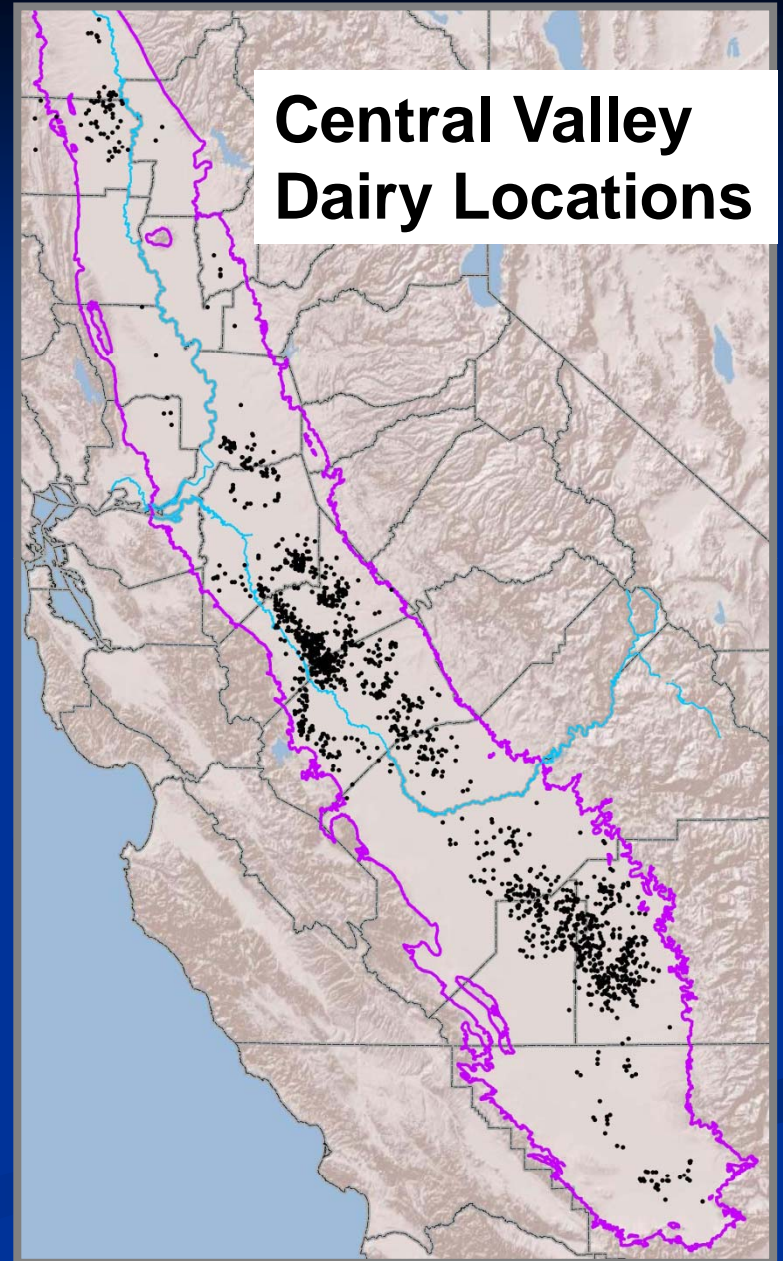
Information Sharing and ID practices protective of water quality
 Compliance/Enforcement
 Determine trends – improvement or degradation

Monitoring Data;
 Assessments;
 Management Practices



DAIRY ISSUE

- ~1.5+ million milk cows on 1,400+ dairies.
- Dairies range from <100 to 10,000 milk cows.
- Milk cows average ~112 lbs of manure/day, or ~170 million lbs of manure/day.
- In addition, manure imports from Chino Basin.



Program Concepts

- Nutrient Management Plans
- Waste Management Plans
- Manure Application Buffers
- Monitoring

GROUNDWATER MONITORING

- Supply Well Monitoring
- Individual Monitoring Systems
- Representative Monitoring

WHAT IS REPRESENTATIVE MONITORING, AND WHY?

- Monitoring a Selected Set of Facilities
- Monitored Facilities to be Representative
- Extrapolate Results to Sites Not Monitored

Representative Monitoring Program Goals

- Identify Management Practices that are Protective of Groundwater Quality Under Different Conditions
- Confirm that Appropriate Management Practices are being Implemented
- Confirm that Water Quality Improvement will be Achieved, in Areas Where Needed

Questions ?

